

## **Wall Mount Horn/Strobe Low Profile Evacuation Horn/Strobe: VF4002-10**

**USCG Type Approved**

161.002/A53/0



### **Standard Features**

- FM Approved, UL 464, UL 1971 & BFP Listed
- Nominal voltage 24VDC
- Units have field selectable candela options of 15, 30, 60, 75, and 110 candela
- Super-Slide™ Bracket - Ease of Supervision Testing
- Checkmate™ - Instant Voltage Verification
- Unit Dimensions: 5" high x 4.5" wide x 2.5" deep
- Synchronize Horn/ Strobe with Fireboy-Xintex Series Control Module
- Prewire entire system, then install signals
- Lower installation and operating costs
- Input terminals 12 to 18 AWG
- Switch selection for high or low dBA
- Switch for chime, whoop, mechanical and 2400Hz tone
- Tamperproof re-entrant grill
- Switch for continuous or temporal 3 (not available on whoop tone)
- Surface mount with the VF4005-10 (Fireboy-Xintex Surface Mount Box)
- Silence horn while strobes remain flashing
- Wide voltage range 16-33VDC or FWR (24VDC units)

### **Overview**

- The Fireboy-Xintex Series is a low profile horn/strobe combination that offers dependable, audible and visual alarms with the lowest current available.
- The Fireboy-Xintex Series 24VDC offers tamperproof field selectable candela options of 15, 30, 60, 75, and 110 candela.
- The Fireboy-Xintex Series horn offers a continuous or syncable temporal three in 2400Hz and mechanical tone, a chime and whoop tone. All tones are easy for the professional to change in the field by using switches.
- The Fireboy-Xintex Series has a minimal operation regardless of input voltage.
- The Fireboy-Xintex Series is shipped with the standard 4" metal mounting plate which incorporates the popular Super-Slide™ feature that allows the installer to easily test for supervision. The product also features a locking mechanism which secures the product to the bracket without any screws showing.
- The Fireboy-Xintex Series also features the Checkmate™ - Instant Voltage Verification feature which allows the installer to check the voltage drop draw and match it to the blueprint.
- The Fireboy-Xintex Series appliances are UL 464 and UL 1971, listed for use with fire protective systems and are warranted for three years from date of purchase.

## Ordering Codes

Part Number	Description	Reverberant dBA @ 10 ft. Per UL 464 <sup>1</sup>	In Anechoic Room dBA @ 10 ft.
<b>VF4002-10</b>	24V Selectable Candela Low Profile Evacuation Horn/Strobe - Wall Mount, Red Faceplate	62-82	100

### VF4002-10 Product Strobe Current Ratings

Candela	15cd	30cd	60cd	75cd	110cd
24 VDC	55mA	63mA	88mA	112mA	136mA
UL Max <sup>1</sup>	78mA	96mA	137mA	180mA	224mA

<sup>1</sup>RMS current ratings are per UL average RMS method. UL max current rating is the maximum RMS current within the listed voltage range 16-33VDC for 24VDC units. For strobes the UL max current is usually at the minimum listed voltage 16VDC for 24VDC units. For audibles the max current is usually at the maximum listed voltage. For unfiltered FWR ratings, see installation manual.

Horn Mode	Minimum dBA @ 10 ft. per UL464 (HIGH)	Minimum dBA @ 10 ft. per UL464 (LOW)	Regulated 24VDC Max. Operating @ High Setting (mA)
Temp 3 2400Hz	78	71*	28
Temp 3 Mechanical	76	70*	25
Temp 3 Chime	70*	66*	15
Continuous 2400Hz	81	74*	28
Continuous Mechanical	80	72*	25
Continuous Chime	70*	66*	15
Whoop	82	69*	56

\*Operating the horn in this mode at this voltage will result in not meeting the minimum UL reverberant level required for public mode fire protection service. These settings are acceptable only for private mode fire alarm use. Use the high dBA setting for public mode application (not applicable when using the chime tone.) The chime tone is always private mode.

**Notes:** To obtain the horn/strobe current draw, add the strobe current draw and the horn current draw.

Operating temperature: 32°to 120°F (0° to 49° C). The Fireboy-Xintex Series is not listed for outdoor use.

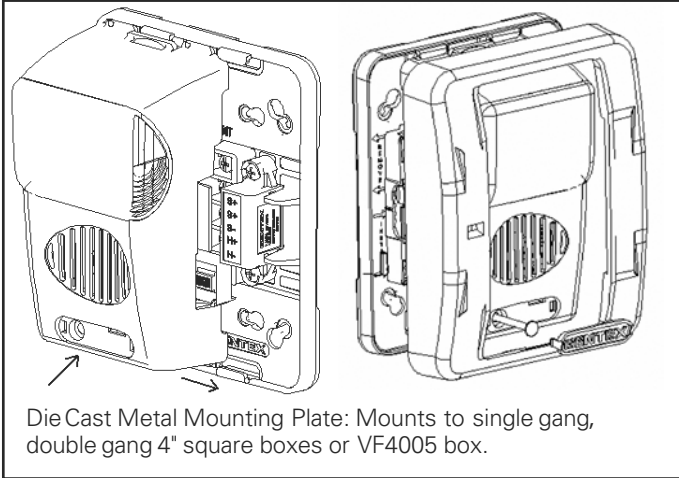
The sound output for the temporal 3 tone is rated lower since the time the horn is off is averaged into the sound output rating. While the horn is producing a tone in the temporal 3 mode its sound pressure is the same as the continuous mode.

For nominal and peak current across UL regulated voltage range for filtered DC power and unfiltered (FWR [Full Wave Rectified]) power, see installation manual.

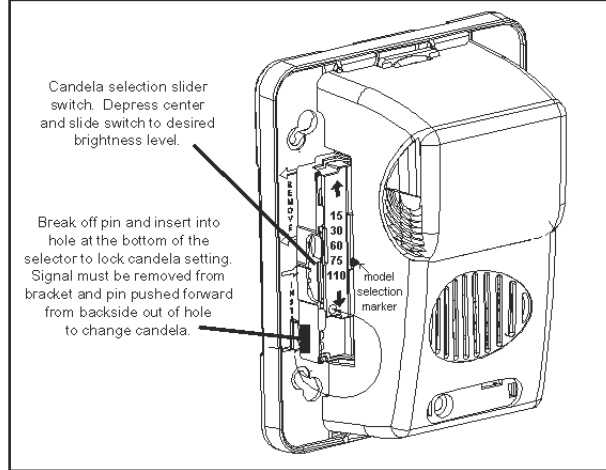
Fireboy-Xintex does not recommend using a coded or pulsing signaling circuit with any of our strobe products.

# FIREBOY - XINTEX

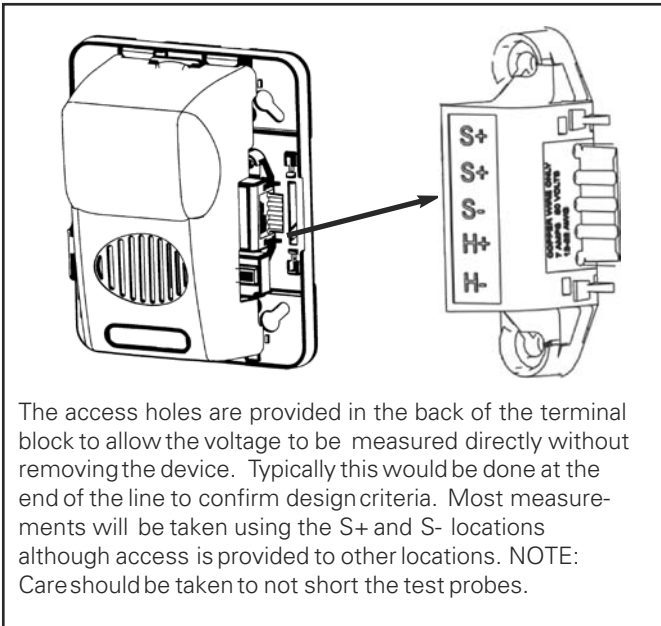
## Mounting Super-Slide™



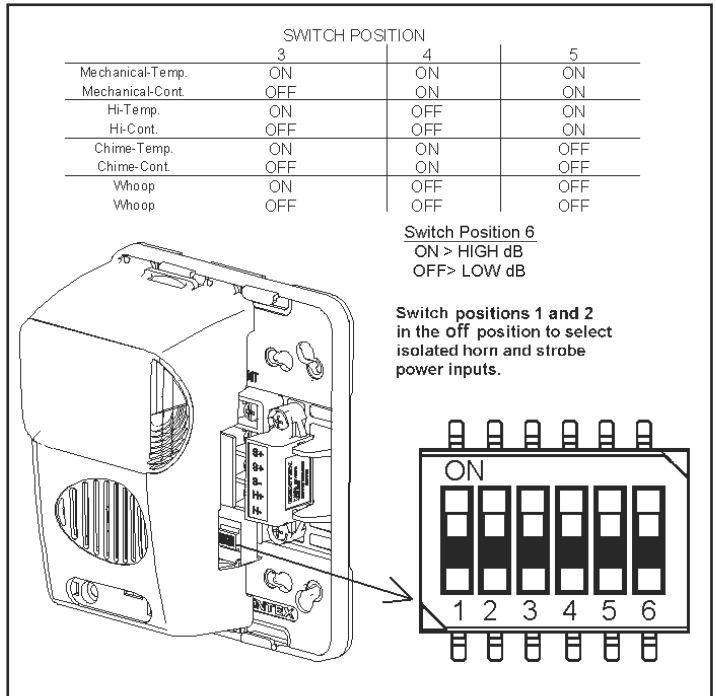
## Candela Selection



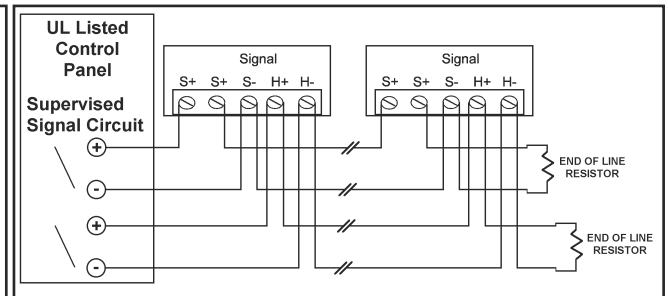
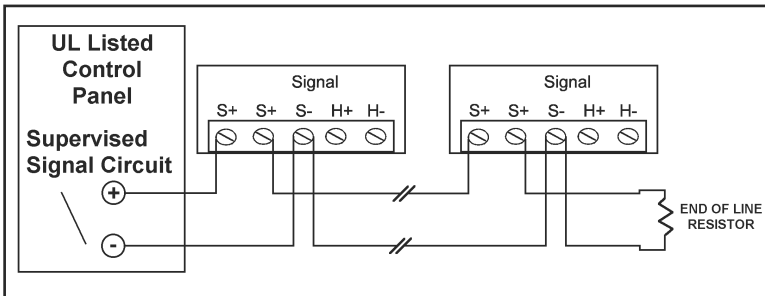
## Checkmate™ - Instant Voltage Verification



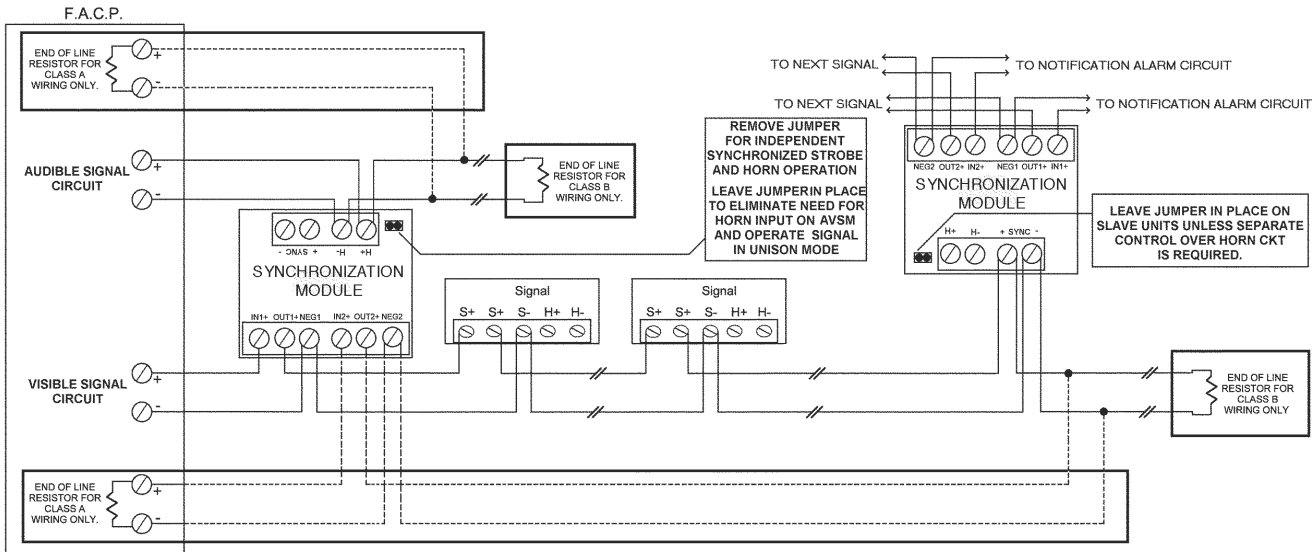
## Switch Locations



## Conventional Series Wiring Diagrams



## Wiring Diagram Fireboy-Xintex Series with Fireboy-Xintex Synchronization Module



### Architects and Engineer Specifications

The audible and/or visible signal shall be Fireboy-Xintex VF4002-10 series or approved equal and shall be listed by Underwriters Laboratories, Inc. per UL 1971 and/or UL 464. The notification appliance shall also be listed with Factory Mutual Listing Service (FM), the California State Fire Marshall (CSFM) and the Bureau of Standards and Appeals (NYC).

The notification appliance (combination audible/visible) shall produce a peak sound output of 100dBA or greater at 12VDC or 24VD as measured in an anechoic chamber. The signaling appliance shall also have the capability to silence the audible signal while leaving the visible signal energized with the use of a single pair of power wires. Additionally, the user shall be able to select either continuous or temporal tone output with the temporal signal having the ability to be synchronized.

Units shall be capable of being installed so that any unauthorized attempt to change the candela setting will result in a trouble signal at the fire alarm control panel.

The audible/visible and visible signaling appliance shall also maintain a minimum flash rate of 1Hz or up to 2Hz regardless of power input voltage. The appliance shall have an operating current of 55mA or less at 24VDC for the 15Cd strobe circuit and 106mA or less at 12VDC for the 15Cd strobe circuit.

The appliance shall be polarized to allow for electrical supervision of the system wiring. The unit shall be provided with a mounting bracket with terminals and barriers for input/output wiring and be able to mount to a single gang or double gang box or double work-box without the use of an adapter plate. The unit shall have an input voltage range of 16-33 volts with either direct current or full wave rectified power for 24VDC models.

The appliance shall be capable of testing supervision without disconnecting wires. Also the appliance shall be capable of mounting to a surface back box. The unit shall also be able to verify voltage at the unit without removing unit.